

LINDEN

LUXURY RESIDENCES

RESIDENCE C13-1-1

LEVEL 13/14

Elevation 42,75 m.

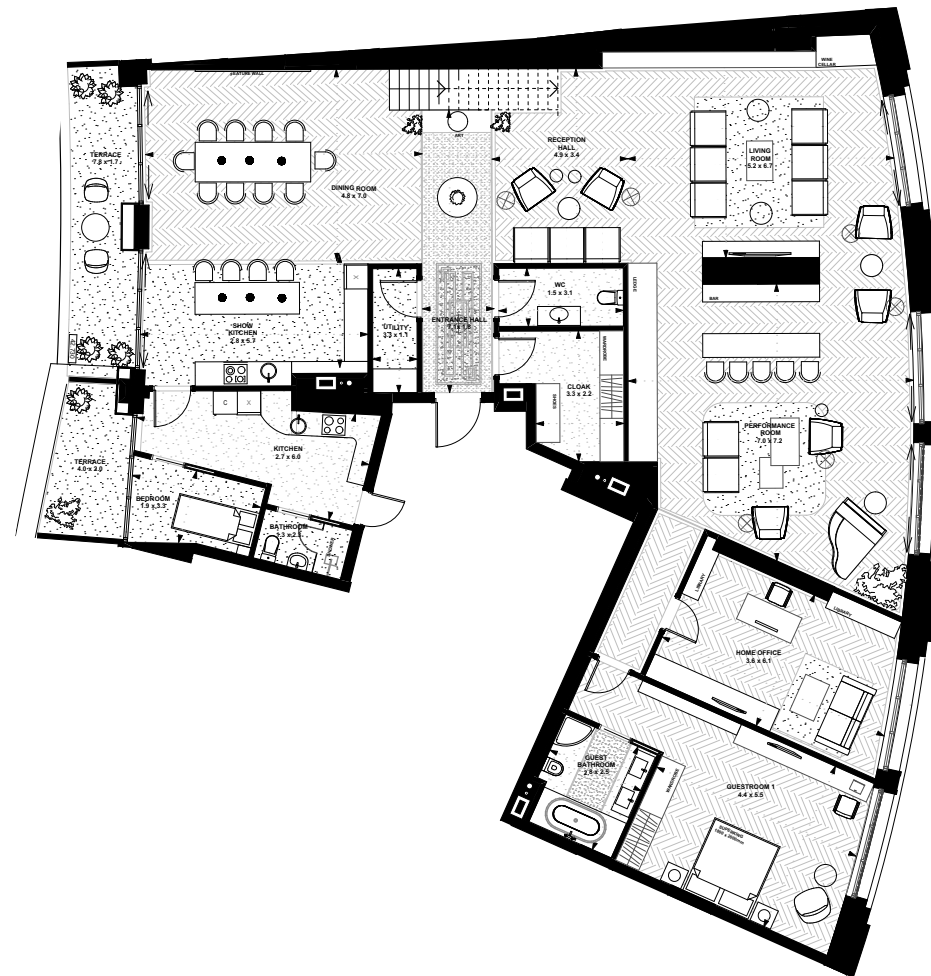
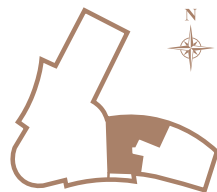
Interior 278,3 m²

Exterior 19,9 m²

Height 3,45 m.

5 bedrooms, 5 bathrooms,
kitchen, home office, balcony,
terrace, performance room,
toilet, open space, entrance

City center view



| | | | |
|------------------|---------------------|----------------|---------------------|
| Dining+Living | 69,0 m ² | Reception Hall | 14,9 m ² |
| Show Kitchen | 17,7 m ² | Home Office | 22,4 m ² |
| Guest Bedroom 1 | 30,8 m ² | Cloak | 8,3 m ² |
| Guest Bathroom 1 | 5,4 m ² | Terrace | 19,9 m ² |
| Service Area | 22,5 m ² | Corridor | 5,2 m ² |
| Storage+Utility | 3,6 m ² | WC | 4,7 m ² |
| Performance room | 52,0 m ² | Entrance | 13,0 m ² |

Sales Head office:
01021, Ukraine, Kiev,
12/5 Lypskaya, str.
+380 (44) 237-23-57
info@linden.kiev.ua

RESIDENCE C13-1-2

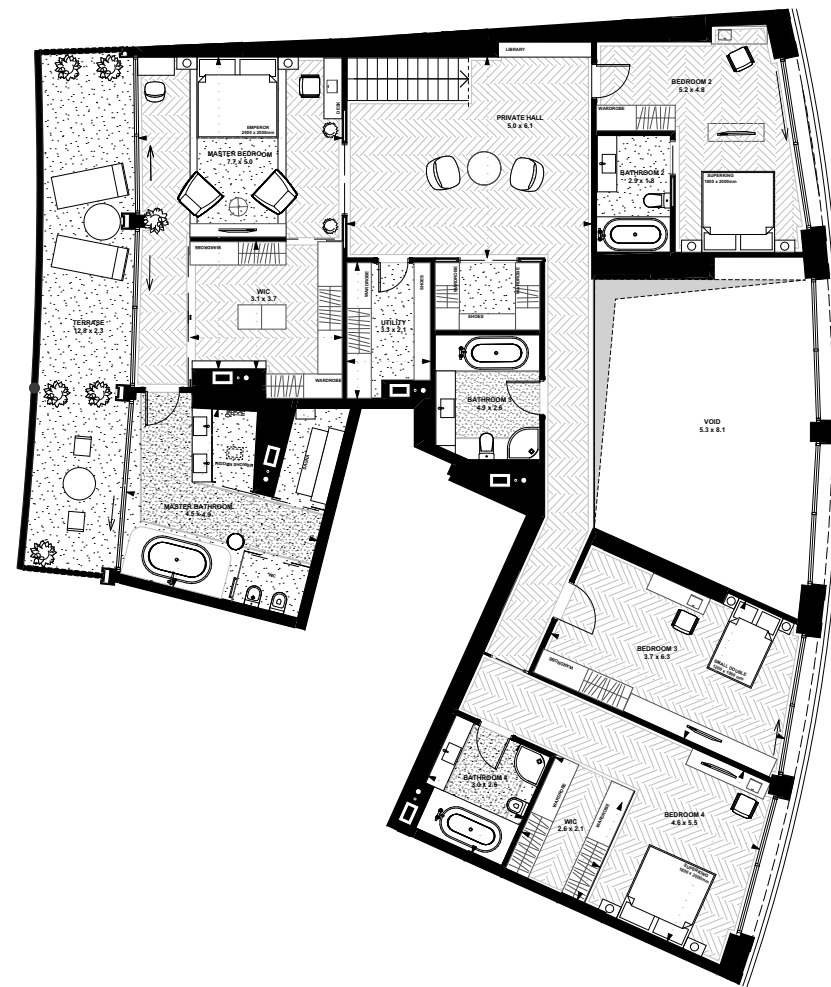
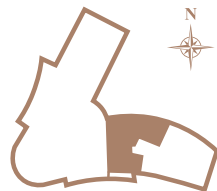
LEVEL 13/14

Elevation 46,45 m.

Interior 212,8 m²
 Exterior 28,8 m²
 Height 3,87 m.

5 bedrooms, 5 bathrooms,
 kitchen, home office, balcony,
 terrace, performance room,
 toilet, open space, entrance

City center view



| | | | |
|-----------------|---------------------|-----------------|---------------------|
| Master Bedroom | 40,8 m ² | Bathroom 4 | 7,4 m ² |
| Master Bathroom | 22,0 m ² | Private Hall | 27,4 m ² |
| Bedroom 2 | 20,0 m ² | WIC | 4,3 m ² |
| Bathroom 2 | 5,3 m ² | Storage+Utility | 6,4 m ² |
| Bedroom 3 | 21,8 m ² | Terrace | 28,8 m ² |
| Bathroom 3 | 7,9 m ² | Corridor | 12,5 m ² |
| Bedroom 4 | 30,0 m ² | WC | 4,7 m ² |

Sales Head office:
 01021, Ukraine, Kiev,
 12/5 Lypskaya, str.
 +380 (44) 237-23-57
info@linden.kiev.ua