

# LINDEN

LUXURY RESIDENCES

## RESIDENCE A13-1-1

### LEVEL 13/14

Elevation 42,75 m.

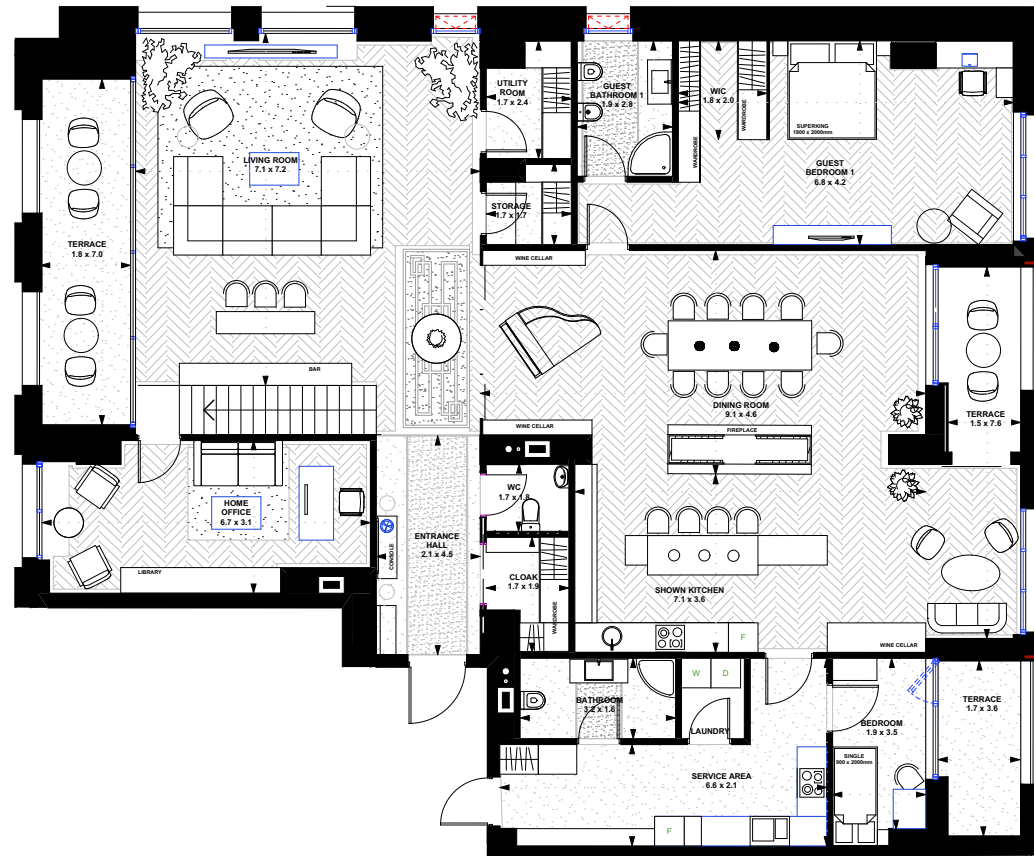
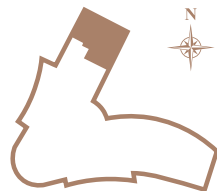
Interior 241,6 m<sup>2</sup>

Exterior 24,5 m<sup>2</sup>

Height 3,45 m.

4 bedrooms, 4 bathrooms,  
kitchen, home office, balcony,  
terrace, performance room,  
toilet, open space, entrance

City center view



Dining+Living	91,7 m <sup>2</sup>	Home Office	19,1 m <sup>2</sup>
Show Kitchen	26,1 m <sup>2</sup>	Cloak	3,4 m <sup>2</sup>
Guest Bedroom 1	30,8 m <sup>2</sup>	Terrace	30,7 m <sup>2</sup>
Guest Bathroom 1	5,4 m <sup>2</sup>	WC	2,3 m <sup>2</sup>
Service Area	32,1 m <sup>2</sup>	Entrance	9,4 m <sup>2</sup>
Storage+Utility	6,3 m <sup>2</sup>		

Sales Head office:  
01021, Ukraine, Kiev,  
12/5 Lypskaya, str.  
+380 (44) 237-23-57  
info@linden.kiev.ua

## RESIDENCE A13-1-2

LEVEL 13/14

Elevation 46,45 m.

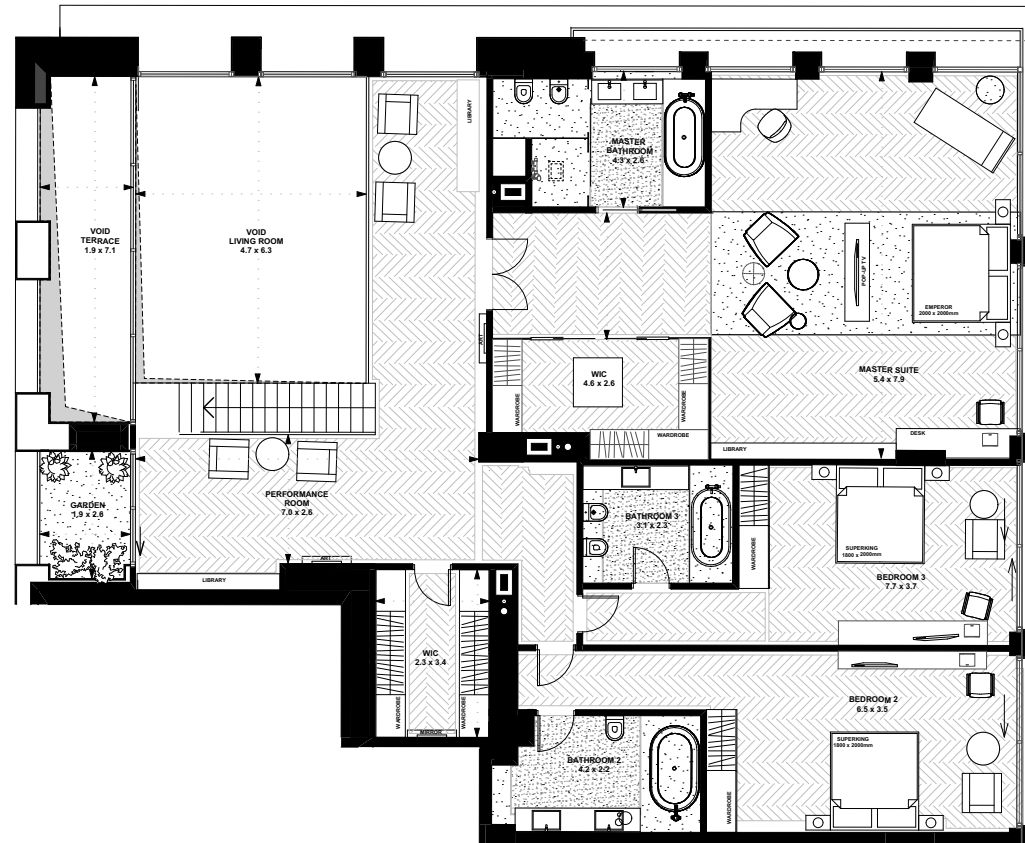
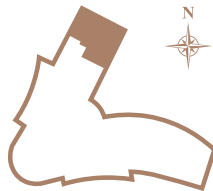
Interior 209,6 m<sup>2</sup>

Exterior 4,7 m<sup>2</sup>

Height 3,87 m.

4 bedrooms, 4 bathrooms,  
kitchen, home office, balcony,  
terrace, performance room,  
toilet, open space, entrance

City center view



Master Bedroom	70,2 m <sup>2</sup>	Bathroom 3	7,4 m <sup>2</sup>
Master Bathroom	10,3 m <sup>2</sup>	Performance room	37,4 m <sup>2</sup>
Bedroom 2	28,0 m <sup>2</sup>	Balcony	4,7 m <sup>2</sup>
Bathroom 2	9,4 m <sup>2</sup>	WIC	8,1 m <sup>2</sup>
Bedroom 3	24,5 m <sup>2</sup>	Corridor	6,2 m <sup>2</sup>

Sales Head office:  
01021, Ukraine, Kiev,  
12/5 Lypskaya, str.  
+380 (44) 237-23-57  
info@linden.kiev.ua